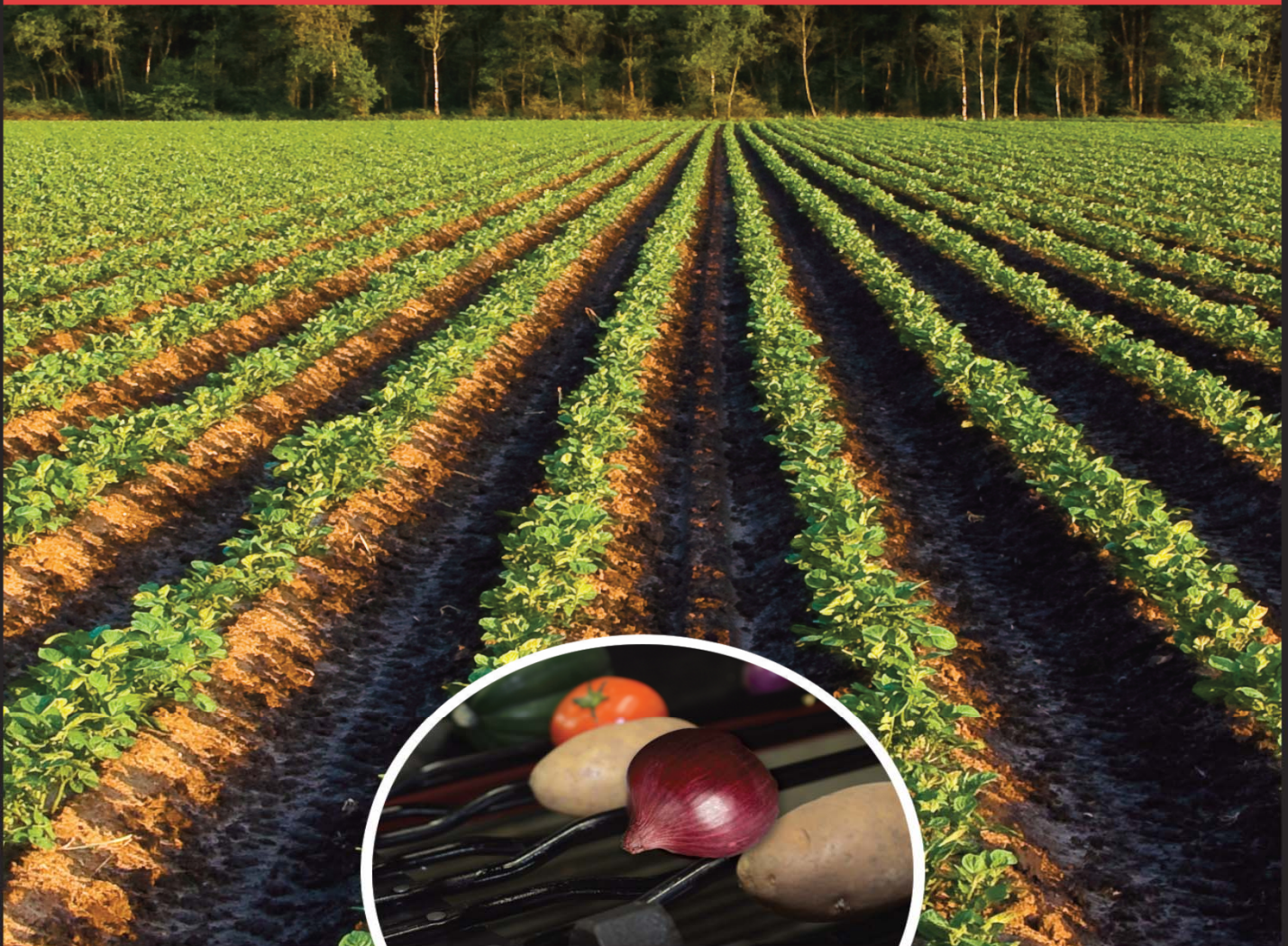


Greeley, CO  
Filer, ID  
Menahga, MN  
800.525.8922



Durabelt, Inc.,  
Montague, PEI  
902.838.3535

[www.noffsingermfg.com](http://www.noffsingermfg.com)



*Proud to be made in America since 1924*

Belt Chain | Hook Chain | Rollers | Sprockets | Wire Belt (Sizing Chain)





# Table of Contents

## **Belted Chain**

Belting Types .....	1-1
Joining Methods - Clips .....	1-2
Joining Methods-Skive & Lap.....	1-3
Rod/Belt Types.....	1-4
Covering & Flights .....	1-5
Covering Dimensions.....	1-6
Flights.....	1-(7,8,9)
Flight Dimensions.....	1-10
Bristle & Side Wing Flight.....	1-11
Specialty Products.....	1-12
Ordering Info.....	1-13

## **Hook Chain**

Links & Assembly.....	2-1
Ordering Info.....	2-2

## **Wire Belt**

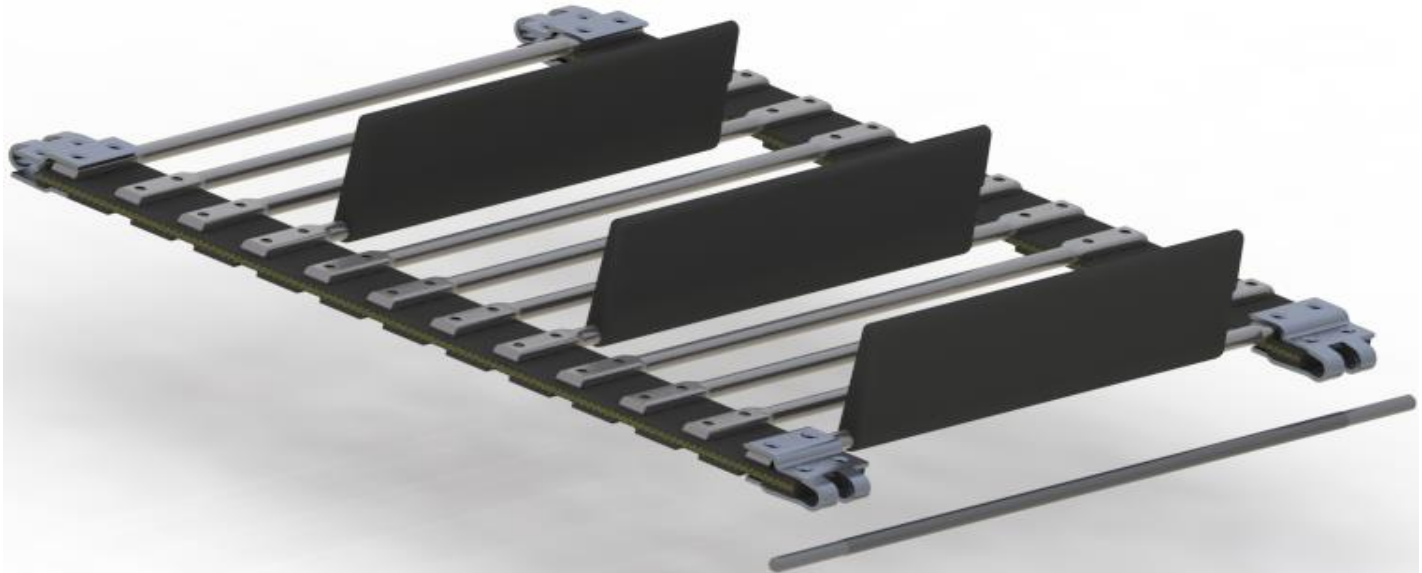
Ordering & Specifications .....	3-1 ,3-2
---------------------------------	----------

## **Parts**

Rollers .....	4-(1,2,3,4,5)
Rubber & Urethane.....	4-6
Molded.....	4-7
Sprockets.....	4-8
Dimensions.....	4-9
Ordering Info.....	4-10





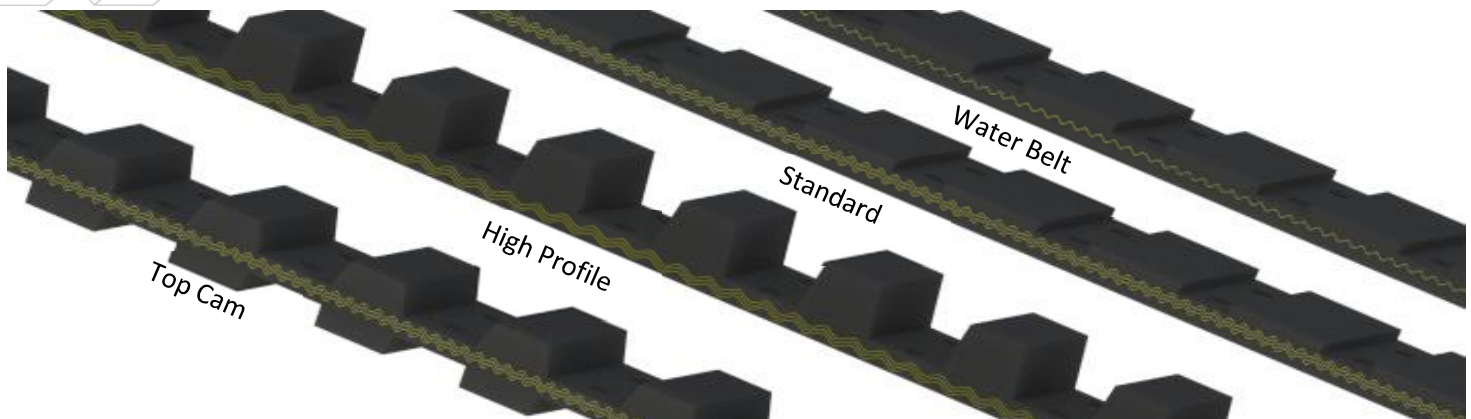


In 1978, belted chain was introduced into the Noffsinger production line. Our belt chain and components have a wide range of applications, including agricultural harvesters (potato, tomato, carrot, onion, sugar beet, ect.), crop sizers, grading and sorting lines, rock pickers/separators, as well as in continuous operation processing plants.





## Belted Chain Belting Types



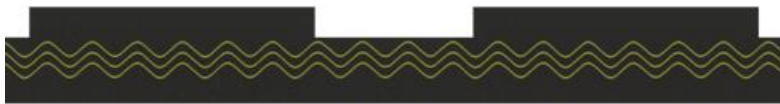
Noffsinger belting is manufactured to strict tolerance for use in belted chain. Common pitches include (mm) 28, 32, 36, 40, 42, 45, 50, 56, 60, 64, 150, 180. Additional profiles & pitches are available on request.



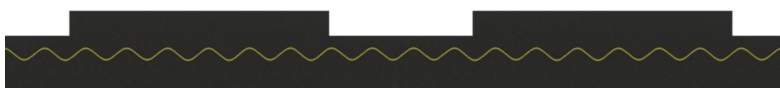
**Top Cam:** Similar to high profile, double profile allows for rod ends to rest below belting, for added bruise protection.



**High Profile:** High Profile belting allows for driving directly on the belting profile.



**Standard Profile:** Our most common belting option, standard belting is typically driven on the rods of the web.



**Water Belt:** Specially designed for high moisture applications.

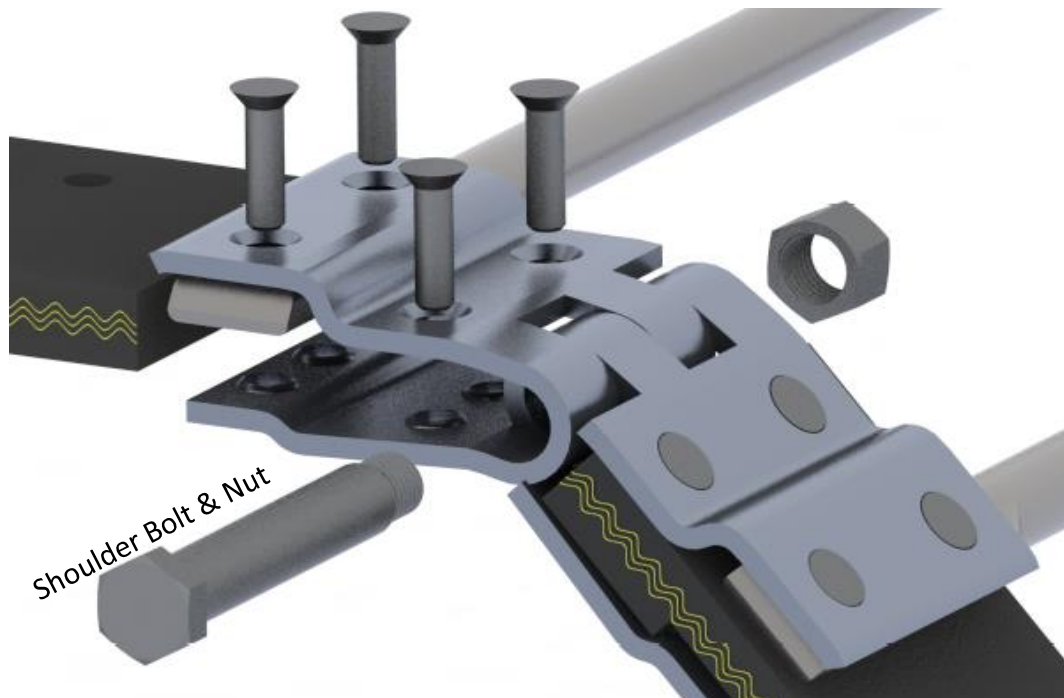


## Belted Chain Joining Methods - Clips

### Threaded Joint Clips



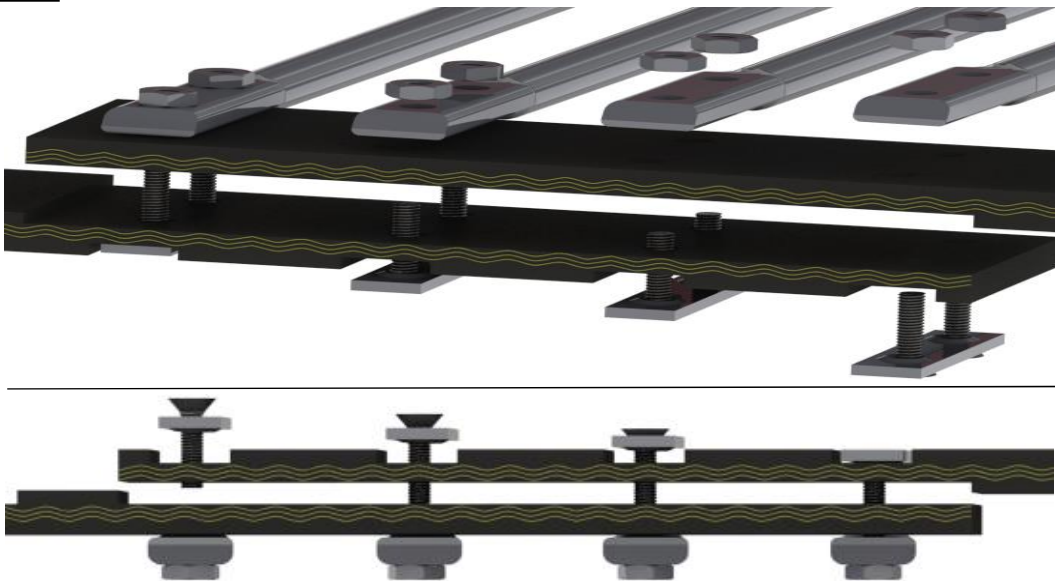
### Non-Threaded (Riveted) Joint Clips





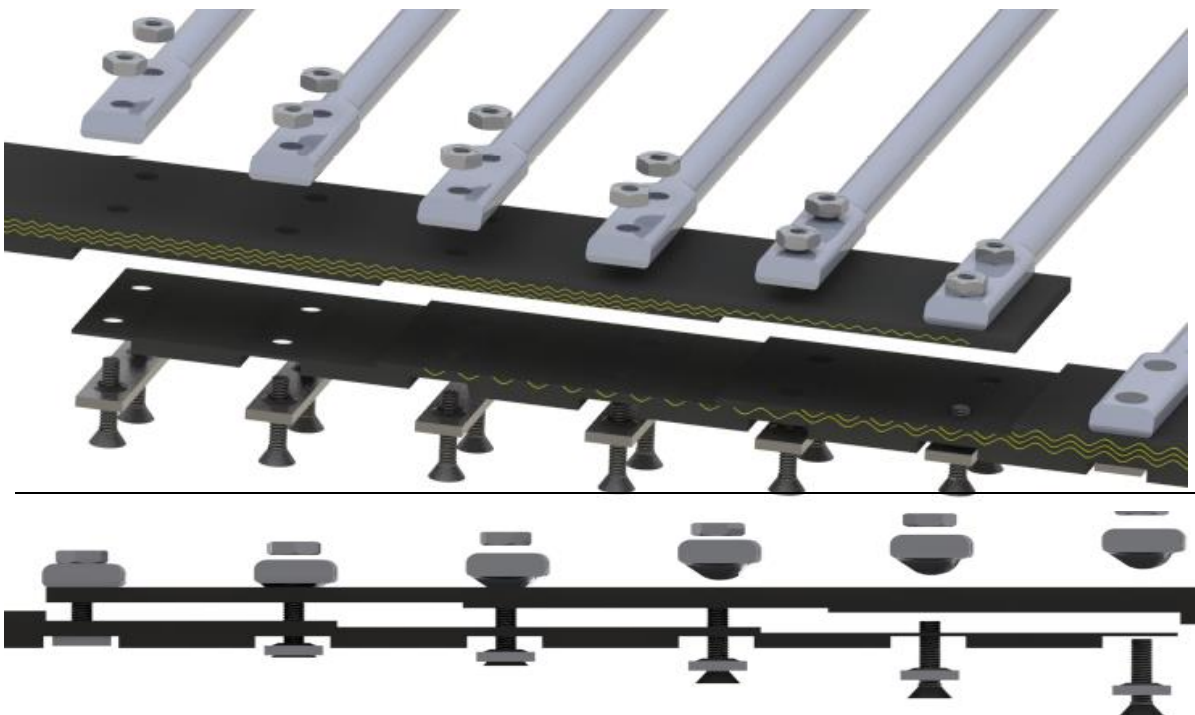


### Lap Joint



Lap joints are available in 2, 3 and 4 pitch configurations. Lap joints are considered one of the more economical joining methods, providing high strength while maintaining most of the belts flexibility. Rods can be threaded, fastened, or backing plate used for large diameter sprockets

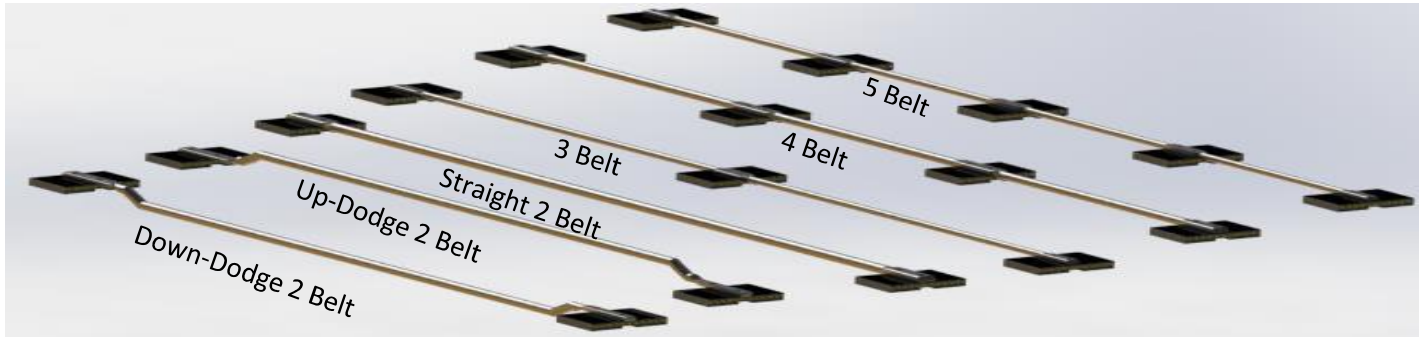
### Skive Joint and Vulcanized



Skive joints are considered to be the strongest and most flexible joining method available. Made to end with same width of belt to accommodate small diameter sprockets. Skive joints are typically made in a 6 pitch configuration. Rods can be threaded or fastened.



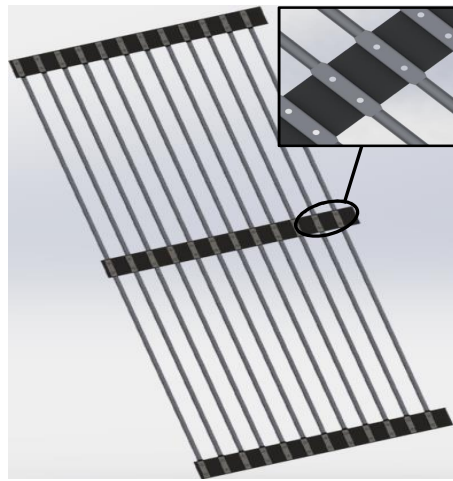
## Belted Chain Rod/Belt Types



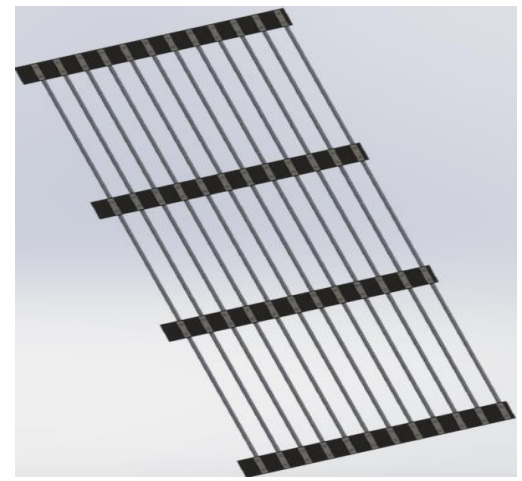
Noffsinger rods are made from high quality American made carbon steel. Rods available in 3/8", 7/16", 1/2", & 5/8" diameter.



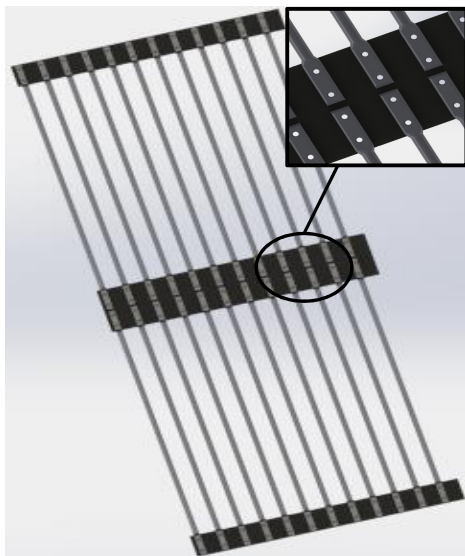
2 Belt



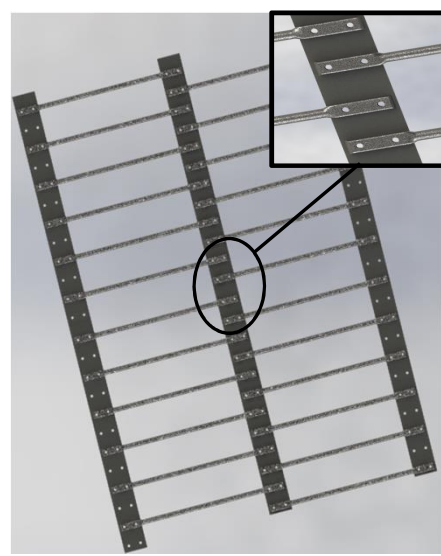
3 Belt



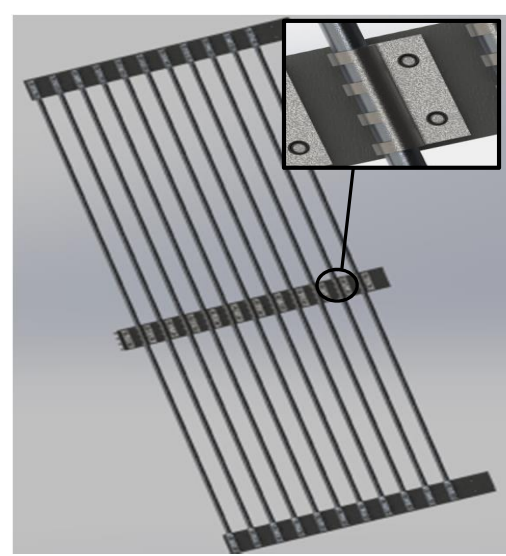
4 Belt Center Forge



Flex Center Belt



Staggered Center Belt

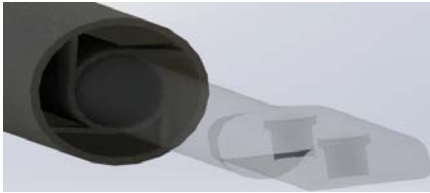


P-Clip Belt

Common configurations are shown above. Rods can be patterned (up dodge, down dodge, plain, choice of covering, flight etc.) according to customer specifications.

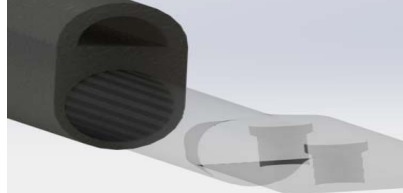


**Coverings (Bonded)**



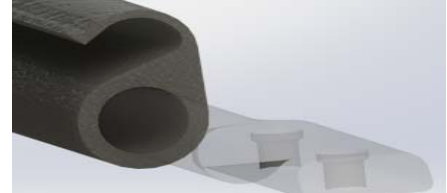
**Cushion Cell (C-Cell)**

Also known as Pillow Cushion, this is a moderately priced covering for use in normal applications. Cushion cell offers excellent bruise protection in a product that has moderate durability.



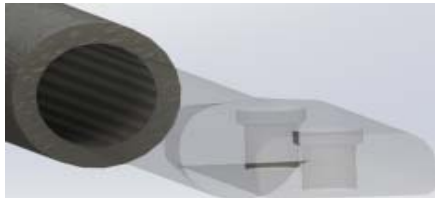
**Cushion Dome (C-Dome)**

C-Dome provides good all around protection in a wide variety of conditions.



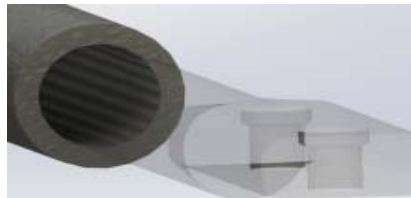
**C-Flex (Bonded)**

C-Flex provides very good bruise protections, durability and cleans well.



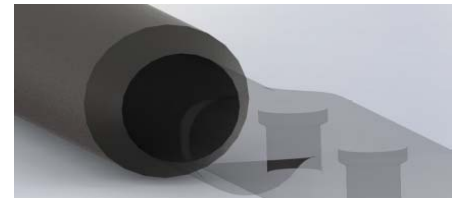
**Soft Rubber Tube (SRT)**

An economical covering for use in normal applications. Soft rubber tube is durable and offers good bruise protection.



**Rubber Tube (RT)**

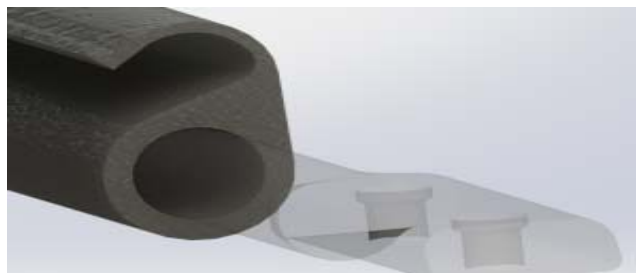
The most durable of all of the coverings, this product provides adequate bruise protection under challenging conditions.



**Plastisol (PC)**

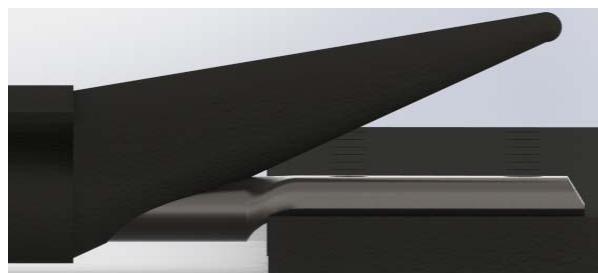
Plastisol process bonds the material to the rod giving you excellent long lasting bruise protection.

**Coverings (Molded)**



**C-Flex(Molded)**

The best all around product, C Flex provides very good bruise protection is quite durable and cleans well under any conditions.

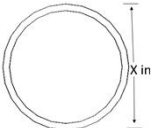
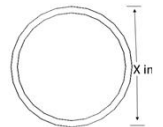
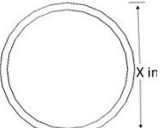

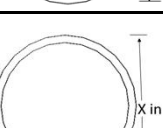


**With Ears**

Optional Ears add protection over rod ends.



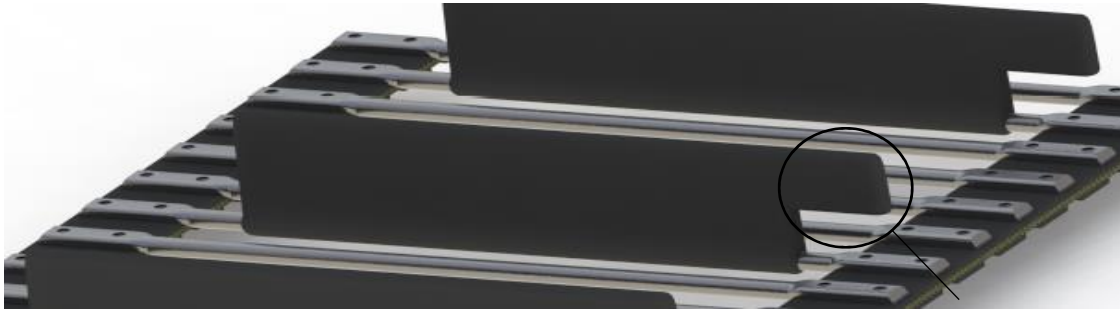
## Belted Chain Covering Dimensions

Diameter for Coverings					
		Rod Diameter			
	2D View	3/8	7/16	1/2	5/8
SRT		.69"	.75"	.88"	1.0"
RM			.62"	.75"	
PC		.67"	.734"	.8"	.94"
C-Cell			.81", 1.", 1.62"	1"	1.19"
RT		.62"	.69"		





**Standard Flight**



**Without Ears(S)**

**With Ears(B)**

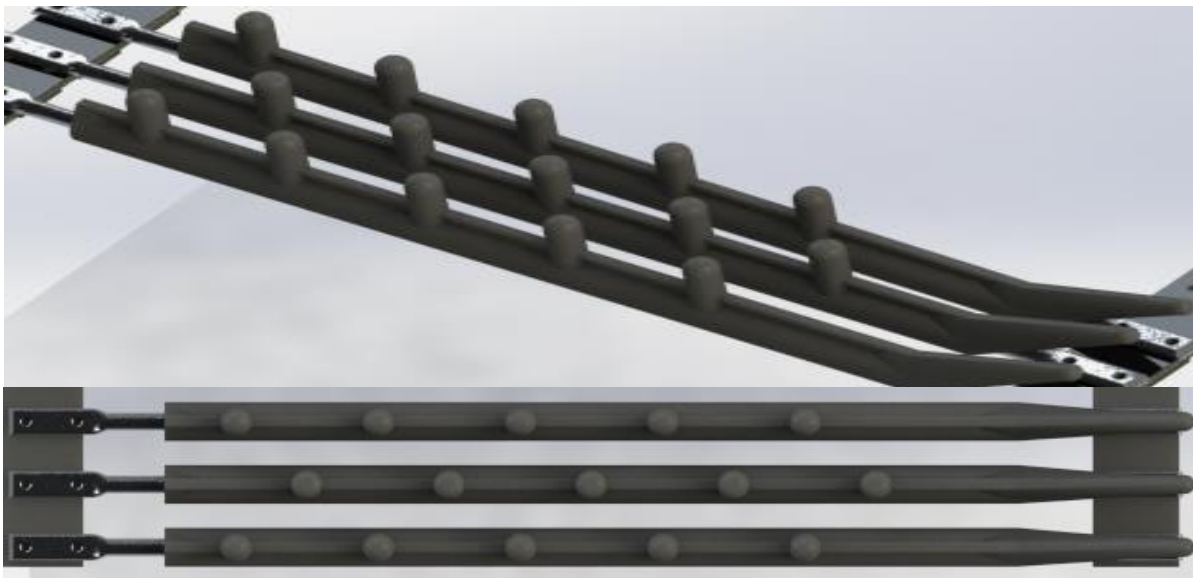
**Extruded Flight**



**Without Ears**

**With Ears**

**Rubber Molded Finger Flights**

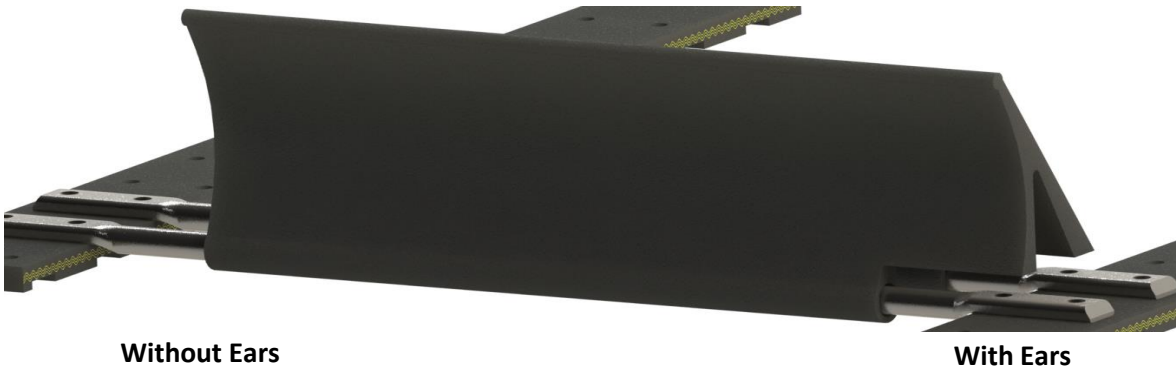


**Without Ears**

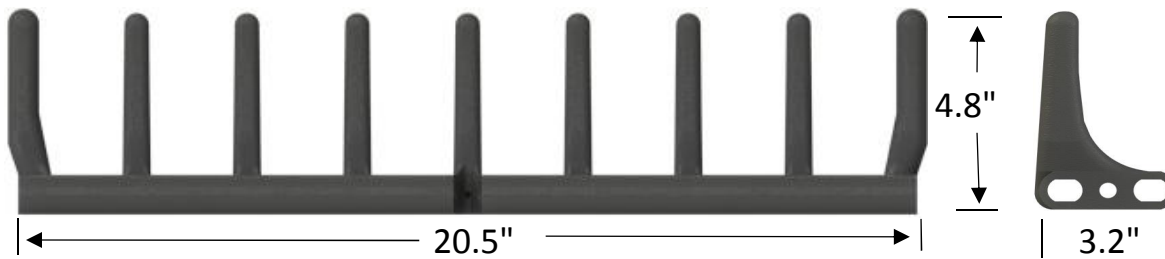
**With Ears**



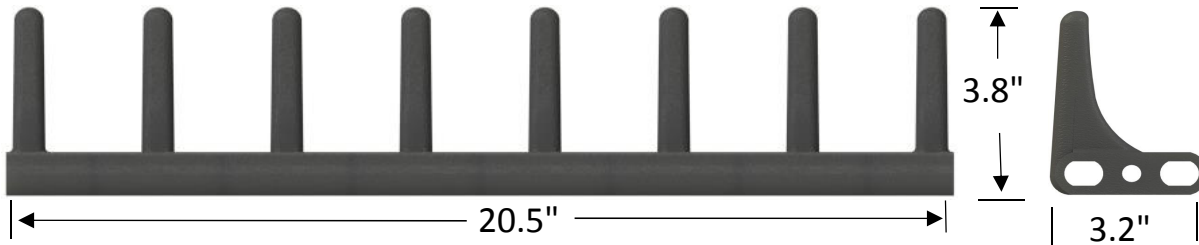
**"A"Flight**



**ROP-9**



**ROP-8**



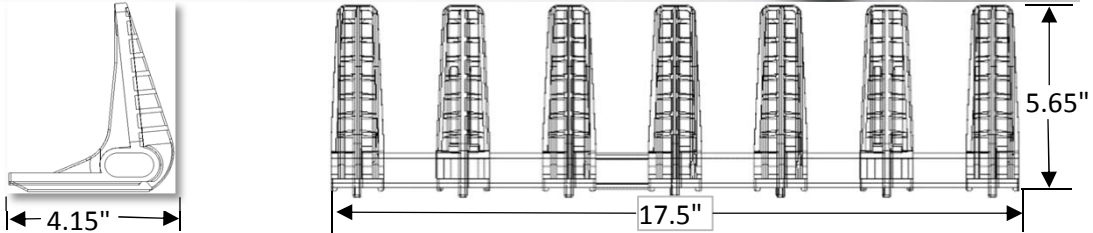


## Belted Chain Flights

### Side Fingers



### NOF-7

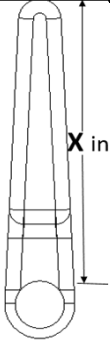
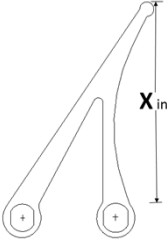
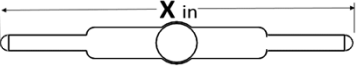
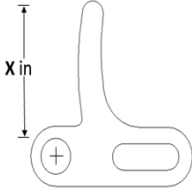


### NOF-2





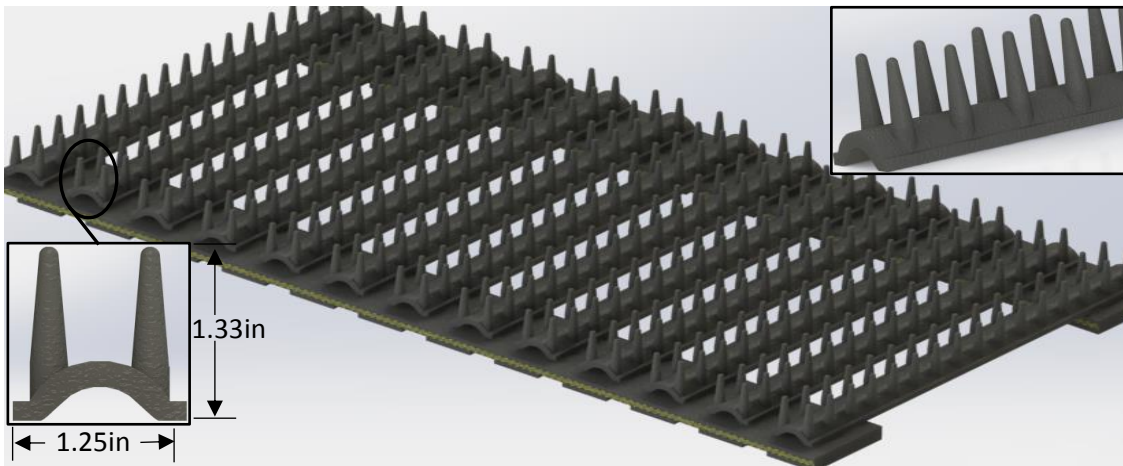
# Belted Chain Flight Dimensions

		Rod Diameter			
		3/8	7/16	1/2	5/8
Standard			1.5", 2.5", 3.5"	1.5", 2.5", 3.5"	
"A" Flight		2",3",4",6"	2",3",4",6"	2",3",4",6"	
Side Wing		1.56", 2.5", 4.5"	1.56", 2.5", 4.5"		
Ext Flight		2",3",4"	2",3",4"	2",3",4"	2",3",4"





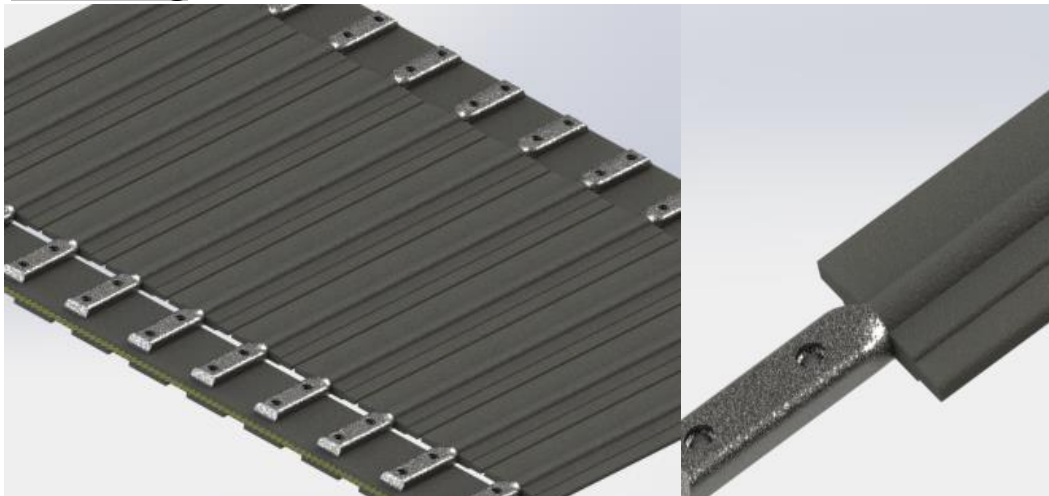
### Standard Bristle



### Flat Bristle



### Side Wing

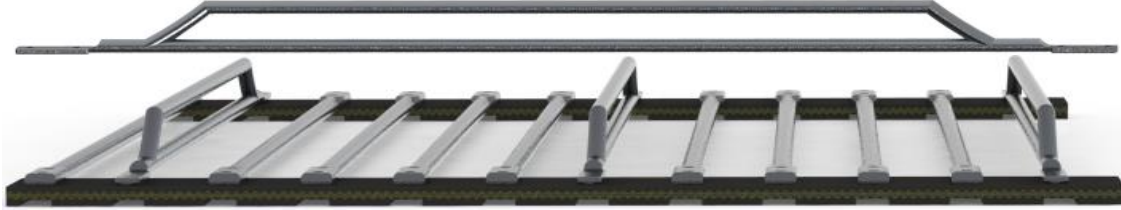




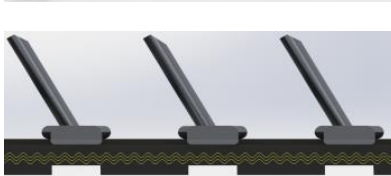
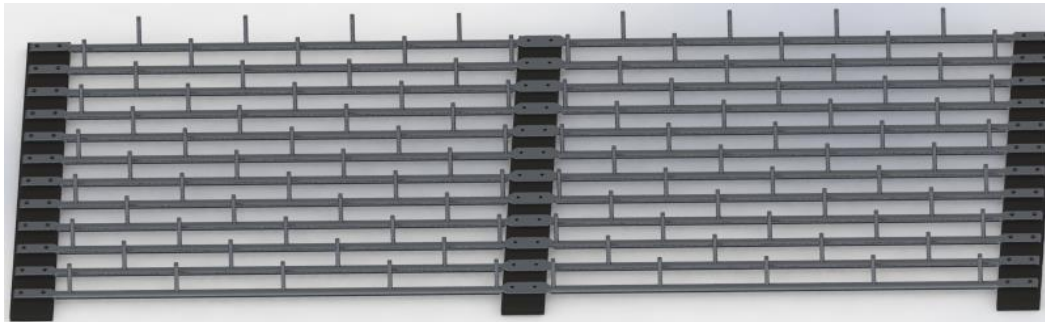
## Belted Chain Specialty Products

*A wide variety of specialty welded products can be fabricated.*

### Welded Flight



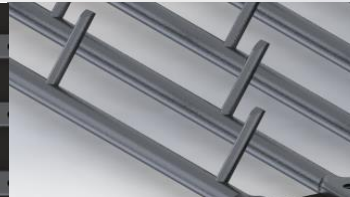
### Welded Finger Flights



Side

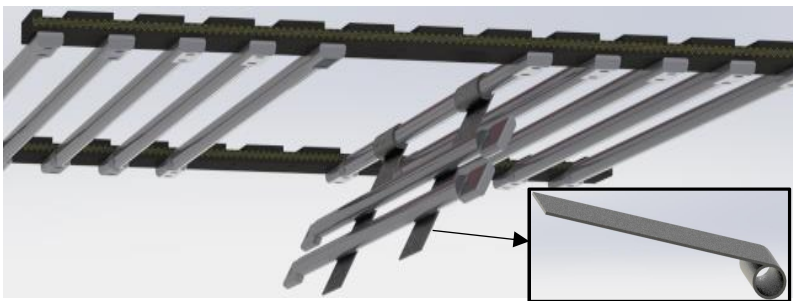


Top



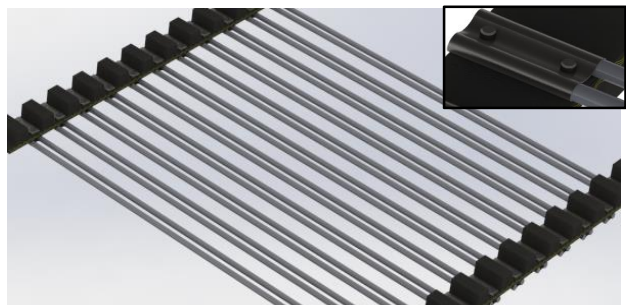
Isometric

### Rock Trap



Allows for the release of rocks or debris captured inside belt.

### Dual Rods





## Belted Chain Ordering Info

When placing your order for Belted Chain, please provide the following information.

### 1.Rod Diameter

38 = 3/8"

44 = 7/16"

50 = 1/2"

62 = 5/8"

Etc.

### 2.Overall Belt Width

1725 = 17-1/4"

3000 = 30"

4200 = 42"

Etc.

### 3.Number of Belts & Belt Size

260 = 2Belts, 60mm wide

275 = 2Belts, 75mm wide

360 = 3Belts, 60mm wide

375 = 3Belts, 75mm wide

### 4.Pitch in Millimeters

Available sizes:

18mm - 300mm.

### 5.LPR( Links Per Roll)

\*all rods and master rod

### 6.Patterns

\*Reference any up or down offset rods and coverings

### 7.Joining Method

HT=Clips

LP=lap

SK=Skive

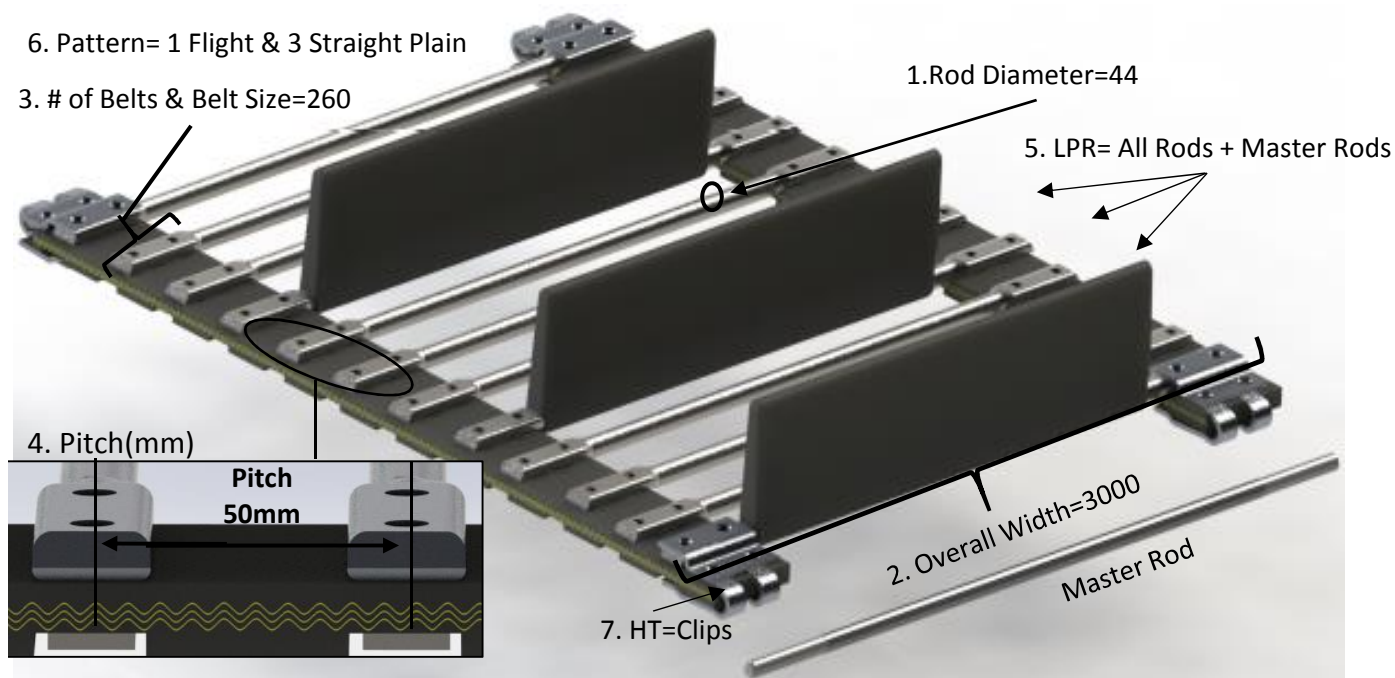
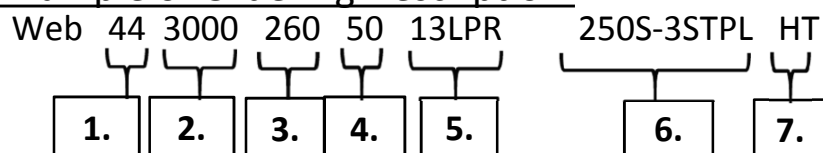
VL=Vulcanized

### Note:

The following are standard unless requested otherwise.

All belts made with standard profile belting, threaded clips, and 1.25" sprocket run.

### Example of Ordering Description:







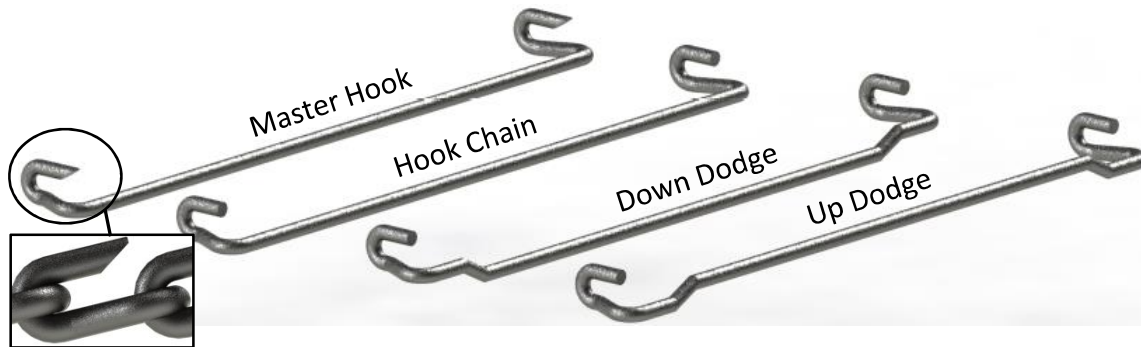


Since the early 1920s, Hook Chain has been used as a standard for conveying produce, rocks, trash, and many other products. Its primary use is in severe applications where strength, toughness, stiffness, and durability are required.





Hook Chain Links



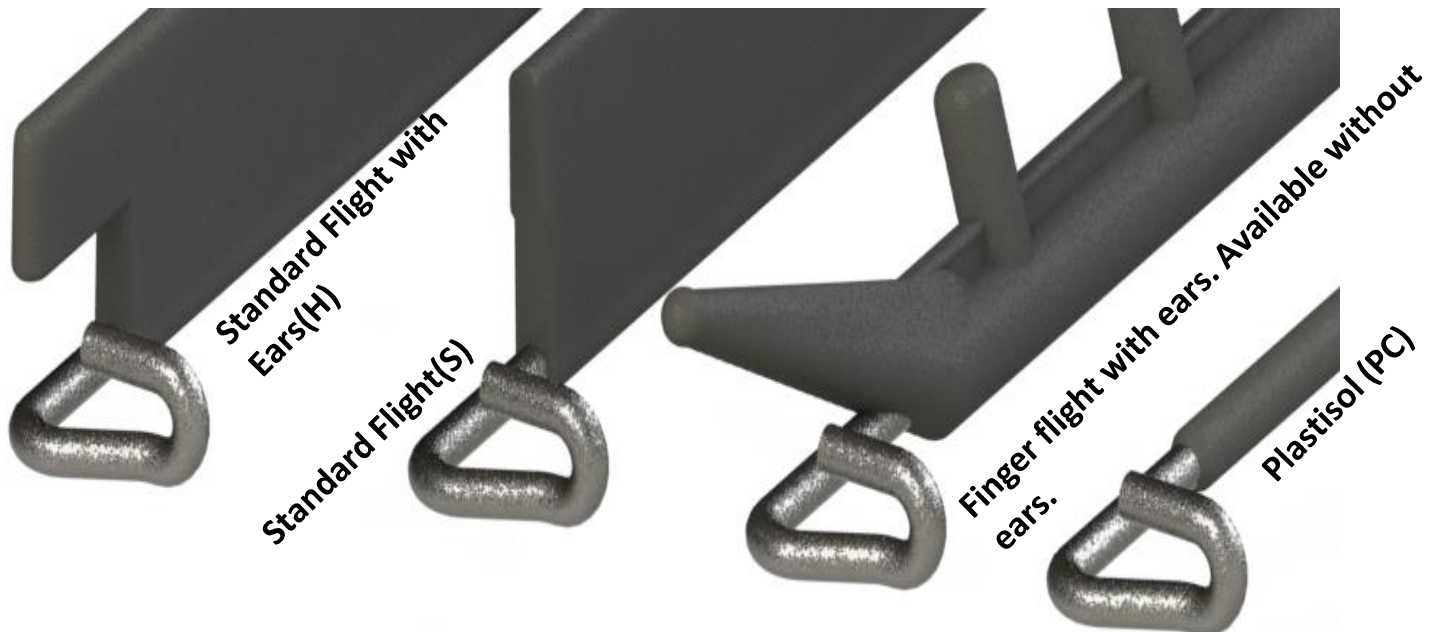
Assembly (Straight Plain)



Assembly ( 1 Up & 3 Down )



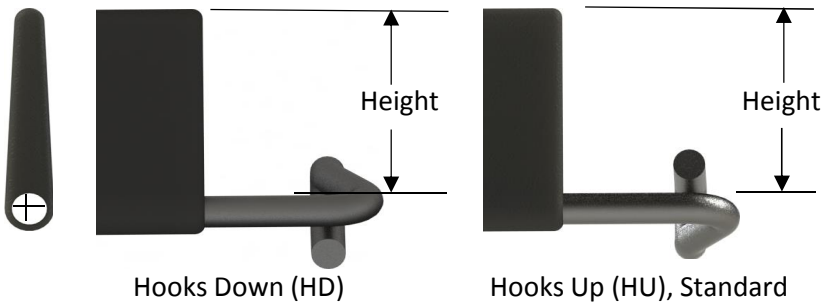
Hook Chain Flights & Coverings





## Hook Chain Ordering Info

1. Rod Diameter	2. Overall Width	3. Pitch in Inches	4. Dodge
44=7/16" 50=1/2" 62=5/8"	1725=17-1/4" 3000=30" 4200=42" Etc.	See Chart	DN=Std Down ST=Straight SP=Special UP=Std Up
5. Covering	6. Material	7. Flight Type	
-Finger (with or without) Ears -Standard Flights -Plastisol	TC=Tuff Cat (1/2" only) SG=Super Grade	075=3/4" (S Style Only) 150=1-1/2" 250=2-1/2" 350=3-1/2"	The following method of pitch measurement can be used when chain is worn or when only one link is available.

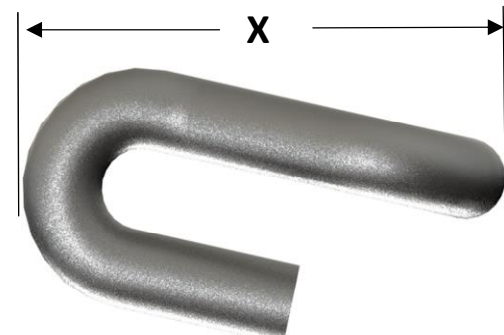
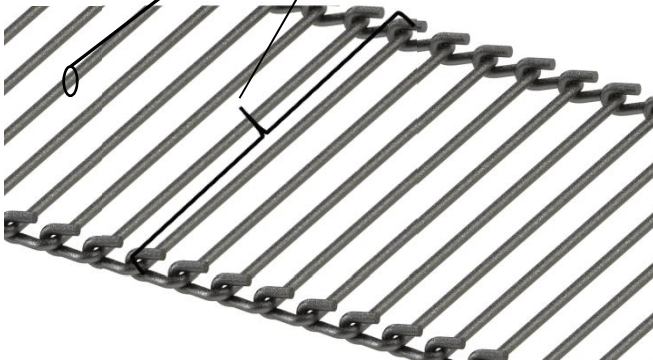


Example: If you measure 2.44". take your rod diameter (.44") and multiply it by 2.

For this example it would be .88". Now subtract your measurement (2.44"-.88")

Your pitch would be 1.56"

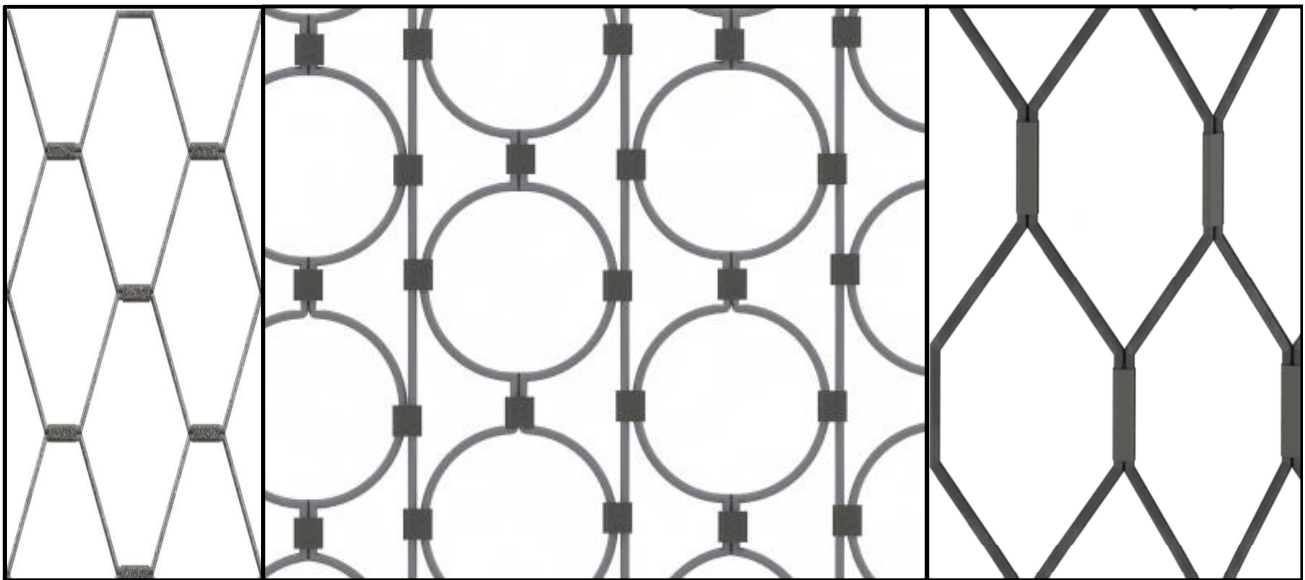
LNK, HC 44 3000 125 ST PL SG  
1. 2. 3. 4. 5. 6.



$$3. \text{ Pitch} = X - (2 * \text{Rod Diameter})$$

### Available Pitches

Pitch	7/16 dia rod	1/2 dia rod	5/8 dia rod
1.00 "	x		
1.25"	x		
1.37"	x	x	
1.56"	x	x	
1.76"	x	x	x
1.88"	x	x	x
2.00"	x	x	x
2.25"	x	x	x
2.37"	x	x	x
2.50"	x	x	x
5.06"			x
6.00"			x



Wire Belt, sometimes called sizing screen or eliminator belt, is used to convey and size many products such as potatoes, onions, tomatoes, apricots, apples, plums, peaches, cherries, nuts, etc. It is available with neoprene coating where gentle handling is required. Available in Hex and Round mesh, with Hex being the most popular since it gives the customer more opening per square foot.







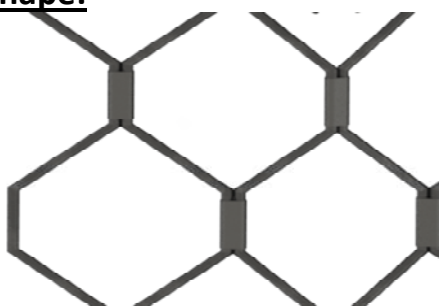
## General Ordering Information:

Part Number = Wire Belt, Hole Shape, Hole Size, Belt Width, Wire Size, Construction

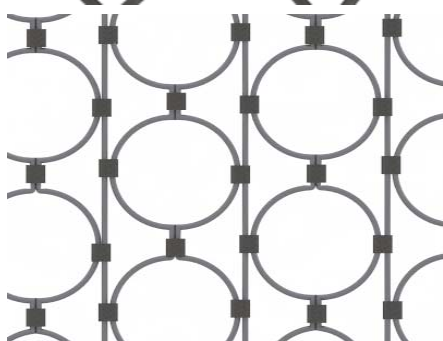
1                      2                      3                      4                      5

### 1. Hole Shape:

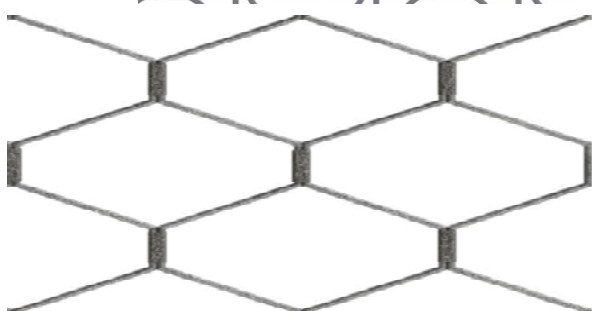
#### Hex



#### Round



#### Hop



### 5. Construction:

Galvanized Wire

Neoprene Coated Wire

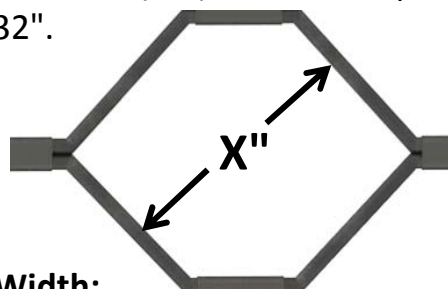
Stainless Steel Wire

### Special Applications Available:

A wide variety of belts are available for special applications, where special handling characteristics must be taken into consideration. Some of the applications are for hop picking, tomato sorting, nut sorting as well as onion and potato belts.

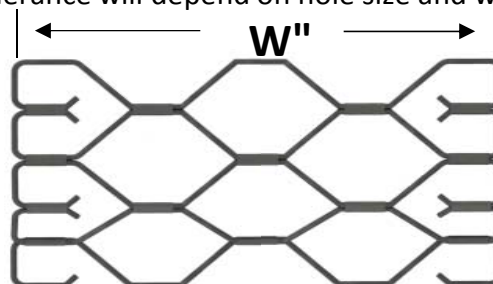
### 2. Hole Size:

Measure Diagonally Across the Hole to the Inside of the Wire ("X") - Tolerance plus or minus 1/32".



### 3. Belt Width:

Measure Across the Width of the Belt ("W") - Tolerance will depend on hole size and width.



### 4. Wire Size:

#10 Gauge .135" Diameter Standard Duty  
Available from 1" to 1-1/8" Hole Size

# 9 Gauge .148" Diameter Standard Duty  
Available from 1-3/16" to 1-7/16" Hole Size

# 8 Gauge .162" Diameter Heavy Duty  
Available from 1-1/2" and Larger Hole Size

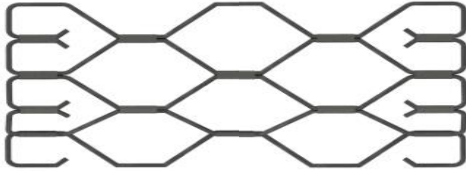


## End Bending:

(Dictated by the Belt Width and Hole Size)

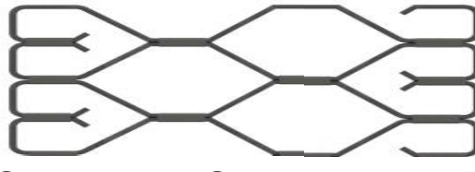
### End Bend Same (Even):

Note the wire ends up in the same place on both ends.



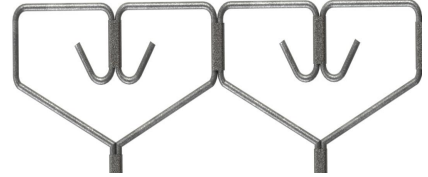
### End Bend Opposite (Odd):

Note the wire bends a different direction on each end (an "S" shape).



### Hop Turn:

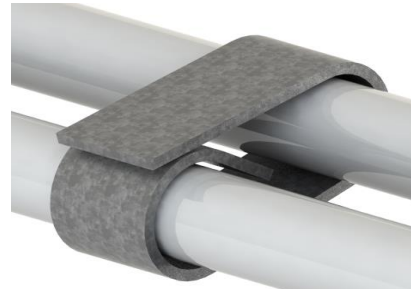
Note the wire bends to the outside away from the flow of product.



## Connector System:

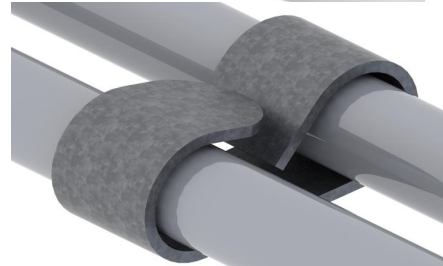
### "Standard" Connector:

Will Last 4-6 Changes  
Comes Standard On Every Belt  
Order Part Number 105449



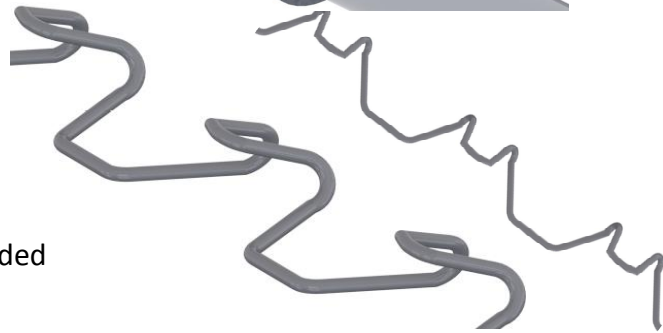
### "Snap Lok" Connector:

Must Be Specially Ordered  
Order Part Number 105448



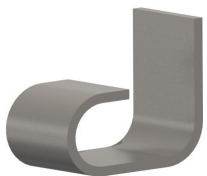
### "Wire Lok" Connector:

Very Quick To Change  
Somewhat Quicker Wear  
Available In 1-1/2" to 3-1/4" Hole Size  
Must Be Specially Ordered  
Order By Part Number According To Size Needed

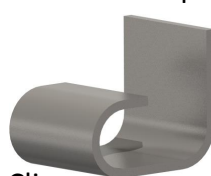


## Repair Clips:

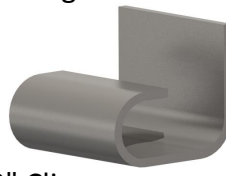
Single clips are available in order to replace those clips worn or broken. Clips can easily be replaced on the sorter line or in the field. These clips will fit all Noffsinger Wire Belt - standard duty or heavy duty.



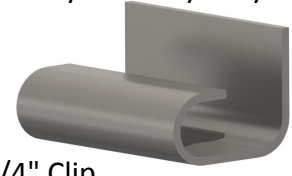
1/4" Clip  
C-1 P/N 105450



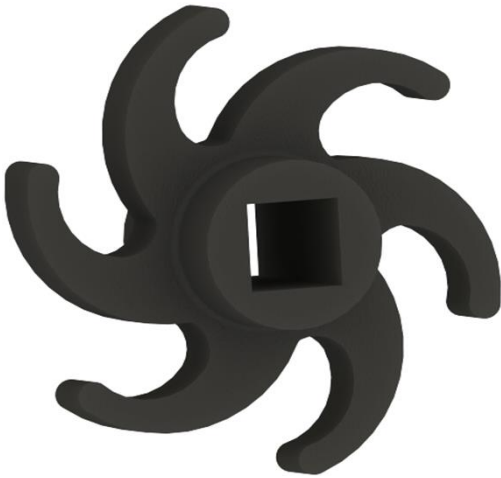
3/8" Clip  
C-4 P/N 105451 9GA  
C-5 P/N 109819 10GA



1/2" Clip  
C-7 P/N 105453 8GA  
C-6 P/N 105452 9GA



3/4" Clip  
C-10 P/N 105456 8GA  
C-9 P/N 105455 9GA



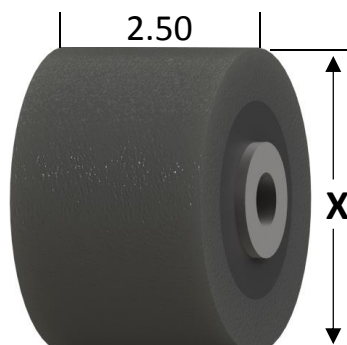
A full line of drive sprockets, friction drive rollers, shakers, flails, and rollers of all types (steel, urethane, and rubber) are available for use with Noffsinger Belt Chain and Hook Chain conveyors. These products are constructed from many types of materials for various conditions and applications.





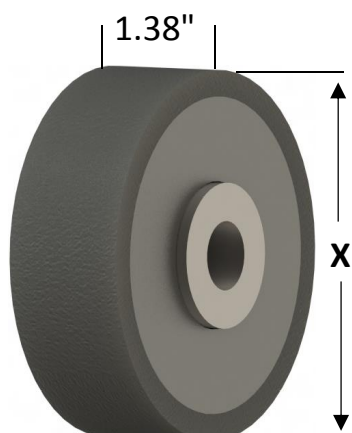


## Urethane Rollers



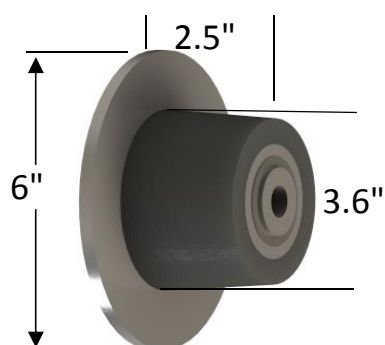
3.5" UR/STL 107598  
H.T. Steel 107528  
4" UR/STL 107599

## Urethane Idlers

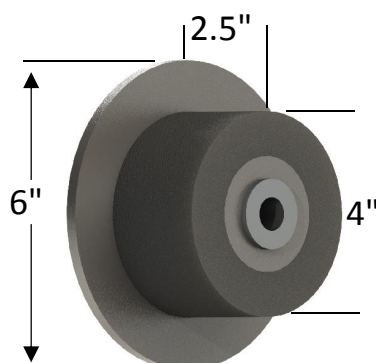


UR/STL  
3.5" - 107608  
4.0" - 107613  
5.0" - 107614

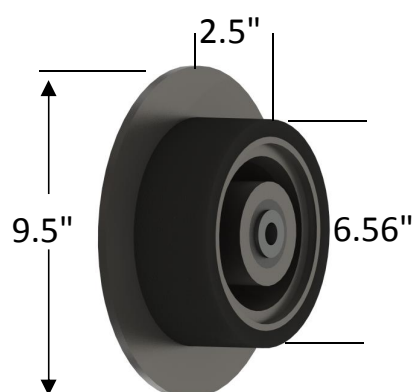
## Flange Rollers



H.T. STEEL 107592  
URETHANE



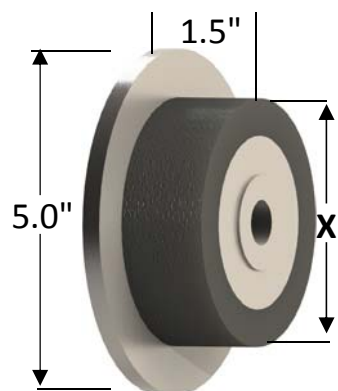
H.T. STEEL 107595  
URETHANE



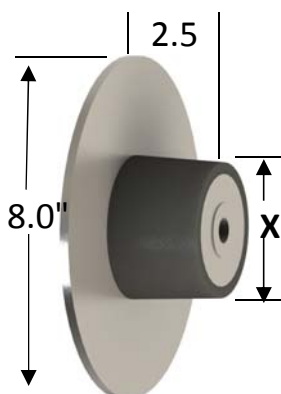
ST 107620



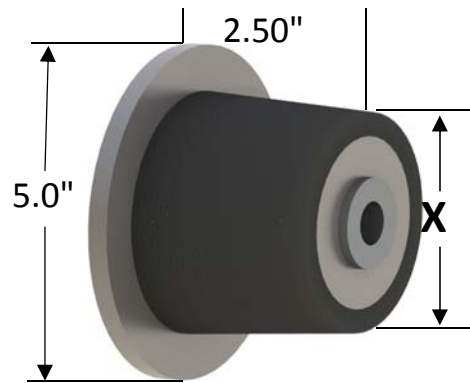
## Parts Rollers



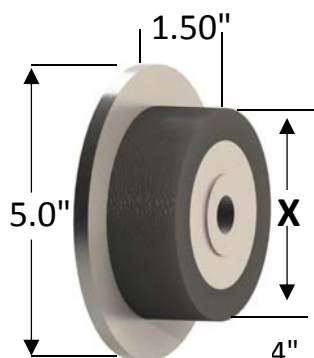
3.5" UR/STL 107601  
H.T STEEL 107562



3.5" UR/STL 107593  
4.0" UR/STL 107596  
5.0" UR/STL 107597

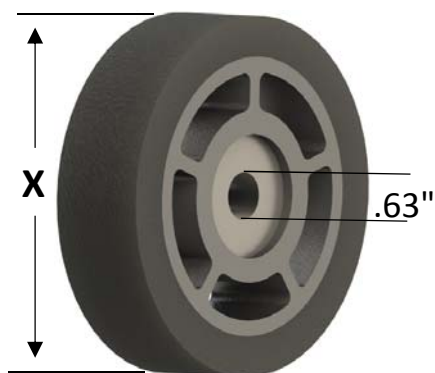


3.5" UR/STL 107591  
4" UR/STL 107594



4" UR/STL 107625

## Urethane Idlers



Idler Rollers Only			
Part Number	Diameter	Width	Bolt Size
107695	2.75"	1.5"	5/8"
107702	4"	1"	1/2"
107667	4"	1"	5/8"
107703	5"	1"	1/2"
107668	5"	1"	5/8"
107716	6"	1"	1/2"
107669	6"	1"	5/8"



Idler Roller Assemblies			
(includes roller, standoff, bolt, nut and lock washer)			
Part Number	Diameter	Width	Bolt size
107698	4"	1"	1/2"
107700	4"	1"	5/8"
107699	5"	1"	1/2"
107701	5"	1"	5/8"
107717	6"	1"	1/2"
107718	6"	1"	5/8"



Standoffs		
Length	.50 Bore	.62 Bore
0.5	109275	107156
0.75	109277	107135
1.5	109283	107240
1.75	109228	107241
2	109287	109291

## Rubber or Solid Urethane



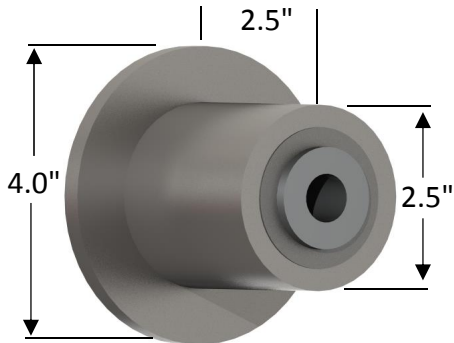
Idler Roller Only			
Part NO.	DIA	Description	Width
103877	3.25"	Rubber	1.00"
112652	4.00"	Urethane	1.00"
103876	4.00"	Rubber	1.00"
112653	5.00"	Urethane	1.00"
103875	5.00"	Rubber	1.00"

Idler Roller Assemblies			
(includes roller, spindle, bolt, nut and lock washer)			
Part NO.	DIA	Description	Bore
103871	3.25"	Rubber	3/8"
113044	4.00"	Urethane	1/2"
103870	4.00"	Rubber	1/2"
113045	5.00"	Urethane	1/2"
103848	5.00"	Rubber	1/2"

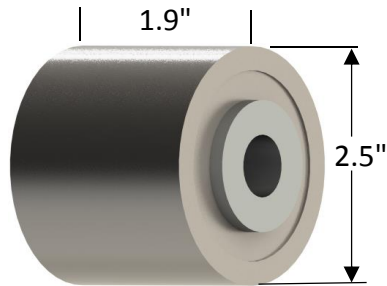
Spindles		
Standoff	.50 Bore	.62 Bore
1.25"	112482	111434
1.75"	111432	111433



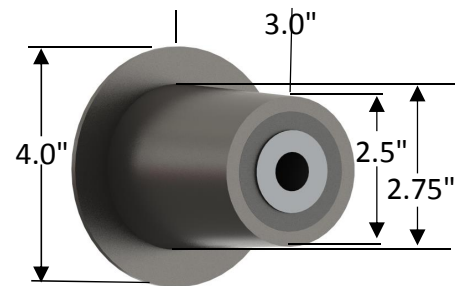
## Heat Treated Steel Rollers



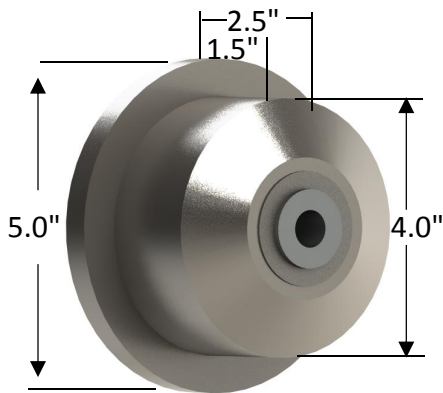
H.T. STEEL 107629



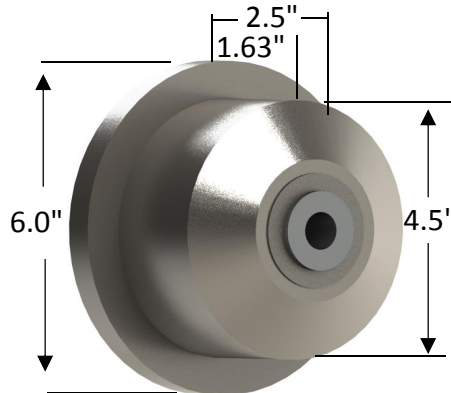
H.T. STEEL 107611



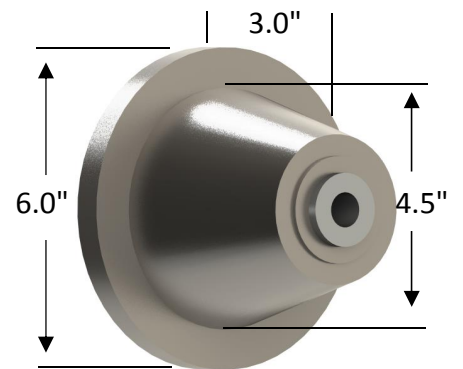
H.T. STEEL 107628



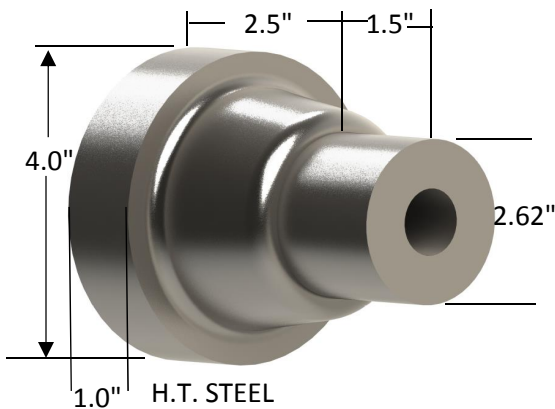
H.T. STEEL 107637



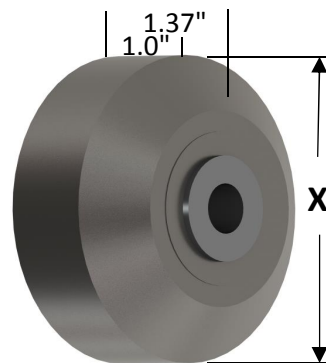
H.T. STEEL 107638



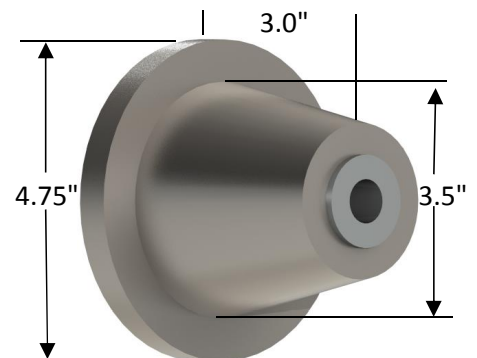
H.T. STEEL 107636



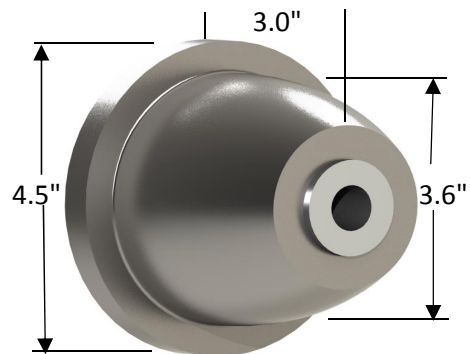
H.T. STEEL  
ROLLER 107604  
STANDOFF 109483  
ASSEMBLY 107724



H.T. STEEL  
4.0" - 107609  
5.0" - 107610  
6.0" - 107632

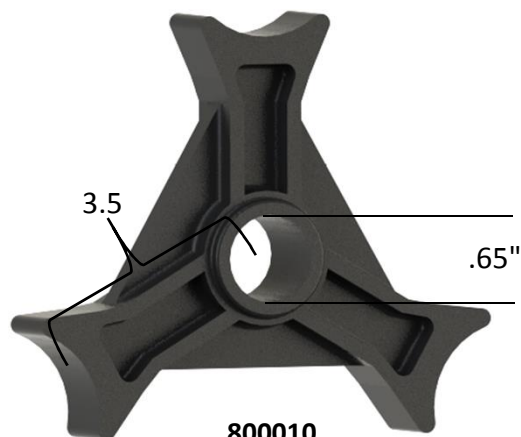


H.T. STEEL 107615



H.T. STEEL 107618

## Steel Shakers



800010



800012 - 1/2" BORE  
800013 - 5/8" BORE



800008

## Urethane Shakers

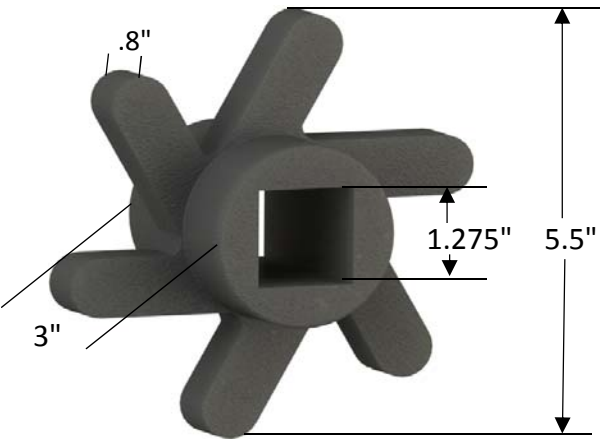


103878 - RUBBER  
112662 - URETHANE





Star Rollers- Complete part number list on page 4-10,4-11, Available in Rubber & Red Urethane



111120



111132

Hex, Rib, & Clod- Complete part number list on page 3-9



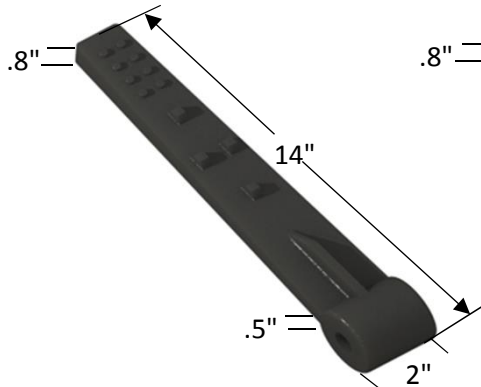
111357



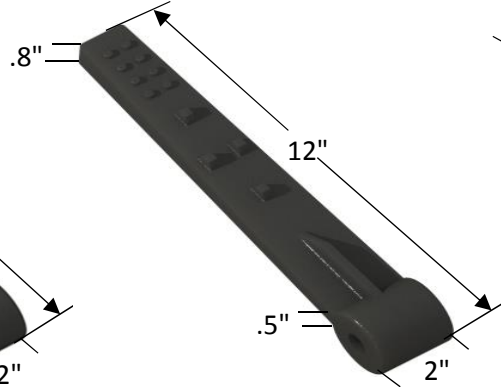
111059



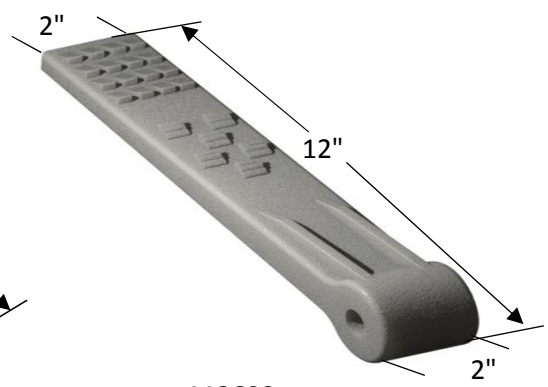
Flails - Complete part number list on page 4-11



111317

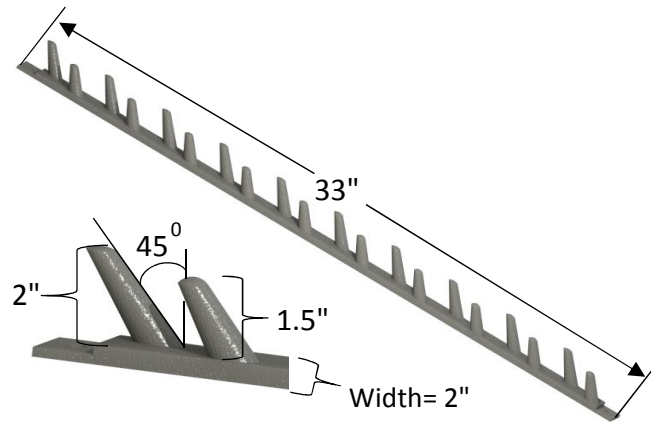


111472

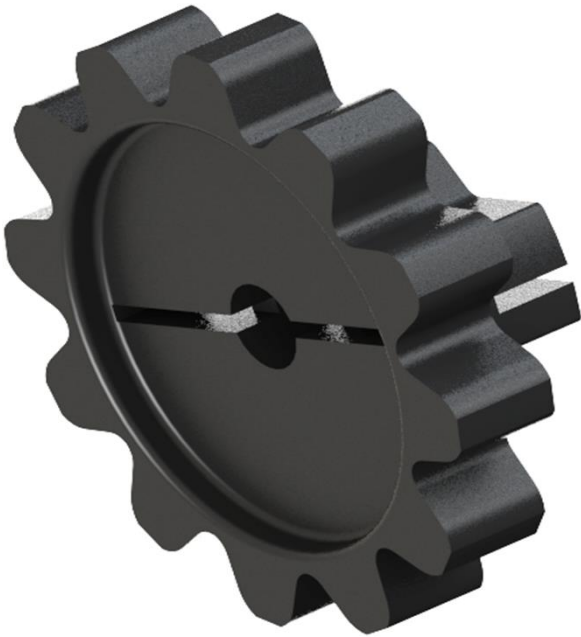


112609

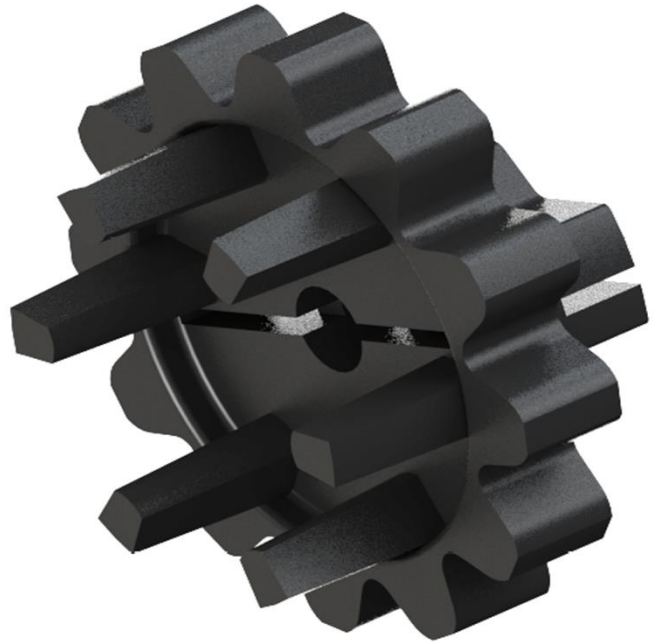
Finger Guard



114419



**Hook Chain Sprocket**



**Belted Chain Sprocket**



**High Profile**

Noffsinger hook and belt chain steel sprockets are made from the highest grade cast iron with the maximum amount of chrome added for extended life. Steel cut and urethane sprockets are also available. Noffsinger has special patterns made exclusively for every sprocket. They are precision-designed to exactly match the chain pitch and sprocket run requirements. With Noffsinger's sprockets, there's no loose or sloppy fit because the pattern has been properly engineered. There are a variety of style, with pitches and number of teeth to fit any type of machinery.



## Sprockets Dimensions

Belt Chain		Hook Chain		Hook Chain	
Sprockets	Diameter	Sprockets	Diameter	Sprockets	Diameter
14T28MM	5-3/4"	14T100	4-7/8"	8T175	5-1/2"
18T28MM	7-3/4"	16T100	5-1/2"	9T175	6-1/4"
22T28MM	8-1/2"	18T100	6-1/4"	10T175	7"
		24T100	8-1/4"	12T175	8-1/8"
12T32MM	6"			14T175	9-1/2"
16T32MM	8"	12T902	5-1/4"		
18T32MM	8-1/2"			8T188	5-3/4"
		12T116(32)	5"	10T188	7-3/16"
10T36MM	5-3/4"	14T116(32)	5-7/8"	12T188	8-3/4"
12T36MM	6-1/2"	16T116(32)	6-1/2"	14T188	9-7/8"
14T36MM	7-3/4"	18T116(32)	7-3/8"		
16T36MM	8-1/2"	20T116(32)	8-1/4"	7T200	5-1/4"
				8T200	6-5/8"
10T40MM	6"	10T125	4-1/2"	9T200	6-3/4"
12T40MM	7-3/8"	11T125	5"	10T200	7-1/2"
14T40MM	8-1/2"	12T125	5-3/8"	12T200	9"
		14T125	6-3/16"		
10T42MM	6-1/2"	16T125	6-15/16"	8T225	7"
12T42MM	8"	18T125	8"	10T225	8-7/8"
14T42MM	8-7/8"	20T125	8-7/8"		
				8T237	7-3/4"
8T45MM	5-3/4"	10T1375(42)	5-3/16"	12T237	10-1/2"
9T45MM	6-5/16"	12T1375(42)	5-7/8"		
10T45MM	7-1/8"	14T1375(42)	7"	8T250	7-3/4"
12T45MM	8-1/8"	16T1375(42)	7-3/4"	10T250	9-1/2"
14T45MM	9"				
		9T156	5-1/4"	6T506	11-3/4"
8T50MM	6-3/4"	10T156	6"	5T600	11-3/4"
10T50MM	8"	12T156	7-3/16"		
12T50MM	9-3/8"	14T156	8-3/8"		
14T50MM					
( 5/8"rod exclude)	10-3/4"	16T156	9"		
		18T156	10"		
5T150MM	11-3/8"				
6T126MM	11"				
6T135MM	12"				
7T150MM	14-3/4"				
8T56MM	6-3/4"				
10T56MM	8-7/8"				



**PART# DESCRIPTION**

**IDLER ROLLERS**

112231 ROLLER,IDLER 400D 088RD 100W  
103876 ROLLER,IDLER 400D 100RD 100W  
103875 ROLLER,IDLER 500D 100RD 100W  
111452 ROLLER,IDLER 500D 125SQ 275W  
111453 ROLLER,IDLER 500D 150SQ 275W



**RIB ROLLERS**

111045 ROLLER,RIB 14X300 100RD 55D  
111054 ROLLER,RIB 14X300 125RD 55D  
111059 ROLLER,RIB 14X300 125SQ 55D  
111351 ROLLER,RIB 16X300 100RD 45D  
111349 ROLLER,RIB 16X300 125SQ 45D



**CLOD ROLLER**

111362 ROLLER,CLOD 3" SMOOTH, LKD  
111464 ROLLER,CLOD 3" SMOOTH, ART  
111363 ROLLER,CLOD 3-1/2" SMOOTH, LKD  
111465 ROLLER,CLOD 3-1/2" SMOOTH, ART  
111364 ROLLER,CLOD 4" SMOOTH, LKD  
111466 ROLLER,CLOD 4" SMOOTH, ART  
111365 ROLLER,CLOD 5" SPIRAL, LKD  
111467 ROLLER,CLOD 5" SPIRAL, ART  
111366 ROLLER,CLOD 10" SPIRAL, LKD  
111780 ROLLER,CLOD 10" SPIRAL, ART



**HEX OR SHAFT DRIVE**

111357 ROLLER,CLOD 3" SMOOTH, Hex  
111354 ROLLER,CLOD 3" SMOOTH, ST  
111358 ROLLER,CLOD 3-1/2" SMOOTH, Hex  
111355 ROLLER,CLOD 3-1/2" SMOOTH, ST  
111359 ROLLER,CLOD 4" SMOOTH, Hex  
111356 ROLLER,CLOD 4" SMOOTH, ST  
111360 ROLLER,CLOD 5" SPIRAL, Hex  
111352 ROLLER,CLOD 5" SPIRAL, ST







#### ACORN ROLLERS

111007 ACORN,FULL 100RD 45D  
111009 ACORN,FULL 125RD 45D  
111013 ACORN,FULL 125SQ 45D  
111015 ACORN,HALF 100RD 45D  
111005 ACORN,HALF 125RD 45D  
111017 ACORN,HALF 125SQ 45D



#### FLAILS

111472 FLAIL,RUBBER 12 TAPERED 062B 75D  
111317 FLAIL,RUBBER 14 TAPERED 062B 75D  
112609 FLAIL,RUBBER 12 STRAIGHT 062B 75D



#### FINGER ROLLER

111118 ROLLER,FINGER 550D 275L 125B 6PT 45D  
111123 ROLLER,FINGER 550D 275L 150B 6PT 45D  
111120 ROLLER,FINGER 550D 300L 125B 6PT 45D  
111126 ROLLER,FINGER 550D 300L 150B 6PT 45D  
111121 ROLLER,FINGER 550D 350L 125B 6PT 45D  
111127 ROLLER,FINGER 550D 350L 150B 6PT 45D



#### ELIMINATOR STAR ROLLERS

112327 ROLLER,STAR 525D 125L 125B 10PT 45D  
112328 ROLLER,STAR 525D 125L 150B 10PT 45D  
112313 ROLLER,STAR 625D 125L 125B 6PT 55D  
112314 ROLLER,STAR 625D 125L 125B 6PT 70D  
112315 ROLLER,STAR 625D 125L 150B 6PT 55D  
112316 ROLLER,STAR 625D 125L 150B 6PT 70D  
112274 ROLLER,STAR 650D 125L 125B 14PT 55D  
112276 ROLLER,STAR 650D 125L 125B 14PT 70D  
112275 ROLLER,STAR 650D 125L 150B 14PT 55D  
112277 ROLLER,STAR 650D 125L 150B 14PT 70D  
116789 ROLLER,STAR 700D 275L 125B 5PT 45D



#### SPACERS FOR STAR ROLLERS

111341 SPACER,RUBBER 225D 025L 125B  
111342 SPACER,RUBBER 225D 038L 125B  
111343 SPACER,RUBBER 225D 044L 125B  
111344 SPACER,RUBBER 225D 062L 125B



#### BUSHING

103761 1/2" Bore x 1-1/4" Long x 5/8" OD  
103762 1/2" Bore x 3/4" Long x 5/8" OD



\*Most rubber molded parts are available in red urethane.  
Please inquire with sales for details.



**STAR ROLLERS**

111132 ROLLER,STAR 525D 275L 125B 5PT 45D  
111335 ROLLER,STAR 625D 125L 125B 6PT 55D  
111336 ROLLER,STAR 625D 125L 125B 6PT 70D  
111331 ROLLER,STAR 625D 125L 125B 12PT 55D  
111332 ROLLER,STAR 650D 125L 125B 12PT 55D  
111333 ROLLER,STAR 650D 125L 125B 12PT 70D  
111334 ROLLER,STAR 650D 125L 125B 12PT 70D  
111134 ROLLER,STAR 650D 275L 125B 6PT 45D  
111312 ROLLER,STAR 650D 300L 125B 6PT 55D



**SPACERS FOR ELIMINATOR ROLLERS**

112353 SPACER,RUBBER 250D 025L 125B  
112354 SPACER,RUBBER 250D 025L 150B  
111315 SPACER,RUBBER 250D 050L 125B  
112355 SPACER,RUBBER 250D 050L 150B  
112356 SPACER,RUBBER 250D 062L 125B  
112357 SPACER,RUBBER 250D 062L 150B  
111340 SPACER,RUBBER 250D 075L 125B  
112358 SPACER,RUBBER 250D 075L 150B  
111338 SPACER,RUBBER 250D 150L 125B  
111337 SPACER,RUBBER 250D 150L 150B



**MISC**

111397 FLAIL,RUBBER 4PT CLEANING  
103878 SHAKER 3PT 75D  
103879 ROLLER,CONE 75D



